



GAT MONTHLY MEMBERSHIP PROGRESS REPORT

Results as of: 5/31/2022

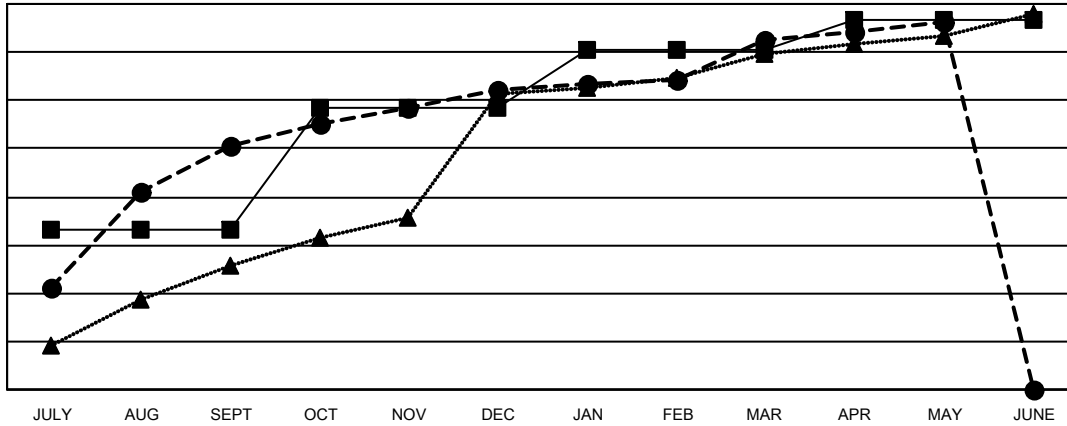
Multiple District 325

LOCATION: NEPAL

Clubs			
RESULTS FOR 2021-2022			
QUARTER	NEW CLUB GOAL	NEW CLUBS	DROPPED CLUBS
JULY/AUG/SEPT	166	252	36
OCT/NOV/DEC	127	59	29
JAN/FEB/MAR	60	51	14
APR/MAY/JUNE	30	19	1

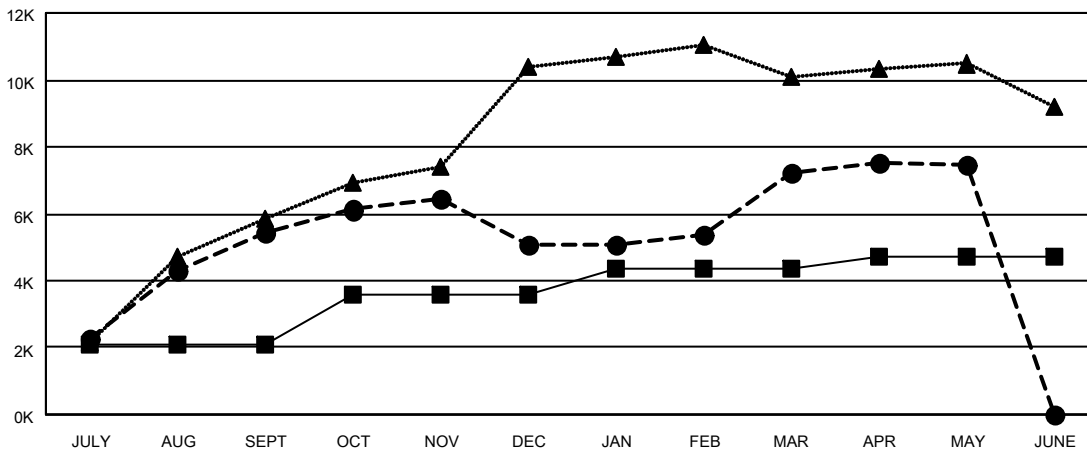
Members			
RESULTS FOR 2021-2022			
QUARTER	MEMBER GROWTH NET GOAL	MEMBER GROWTH ACTUAL	DROPPED MEMBERS ACTUAL (including transfers)
JULY/AUG/SEPT	2087	7,566	2,061
OCT/NOV/DEC	1487	2,318	2,652
JAN/FEB/MAR	800	3,225	937
APR/MAY/JUNE	320	1,262	964

GOALS AND ACTUAL NEW CLUBS CUMULATIVE



- - CURRENT YEAR GOALS FOR NEW CLUBS
- - CURRENT YEAR ACTUAL NEW CLUBS
- ▲ - LAST YEAR ACTUAL NEW CLUBS

GOALS AND ACTUAL MEMBERS CUMULATIVE



- - MEMBER GROWTH NET GOAL
- - MEMBER GROWTH ACTUAL
- ▲ - LAST YEAR MEMBERSHIP ACTUAL

DROPPED CLUBS: 80	
DROPPED MEMBERS	
DECEASED	42
CLUB CANCELLED	1,619
OTHER	4,954
TOTAL	6,615

1210 CLUBS OF 2022 ADDED 1 OR MORE NEW MEMBERS

[CLICK HERE FOR CUMULATIVE MEMBERSHIP DATA](#)

GENDER DISTRIBUTION	
MALE	34,142 (70.48%)
FEMALE	14,295 (29.51%)
NON BINARY	0 (0.00%)
PREFER NOT TO ANSWER	7 (0.01%)
TOTAL FAMILY UNIT MEMBERS	39,602
FAMILY MEMBERS PAYING HALF DUES	27,362